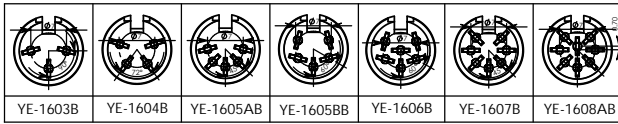
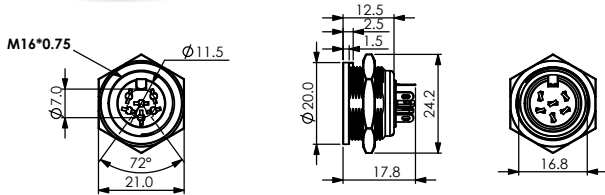
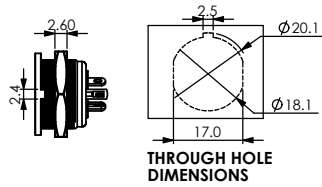


YE-160XB DIN SOCKET PANEL MOUNT SCREW LOCKING



MATERIAL :

1. SHIELD COVER : Zn ALLOY CHROME PTD.
2. GND CONT. : COPPER NICKEL PTD.
3. SCREW NUT : BRASS NICKEL PTD.
4. HOUSING : PA66
5. TERMINALS : BRASS SILVER PTD.

SPECIFICATION :

Rating : 100V AC 1A max.

Contact Resistance :

Pins 30mΩ max.

Shell 50mΩ max.

Insulation Resistance :

100MΩ at 500V DC min.

Voltage Withstand :

250V AC for 1 minute



YE-1603B



YE-1604B



YE-1605AB



YE-1605BB



YE-1606B



YE-1607B



YE-1608AB



YE-1608BB